



GreenEO°

Connect with us



www.linktr.ee/greeneo

Satellites for Sustainable Land Use

Using space-based technologies and digital innovation to support cleaner air, healthier ecosystems, and smarter land use decisions across Europe

Project duration: March 2025 - February 2029

Satellites for Sustainable Land Use

GreenEO is a European research and innovation project that uses satellite data and digital tools to improve how we monitor and manage land use. Our aim is to support sustainable development while helping achieve environmental goals such as reducing pollution, protecting biodiversity, and adapting to climate change.

Our Focus Areas



Cities

Development of high-resolution air quality maps; Tools to support zero-pollution strategies in cities



Agriculture

Mapping of ammonia emissions and nitrogen deposition; Tools to assess biodiversity risks and land restoration potential



Governance

Sustainable land-use practices;
Green transformation use cases



Forests

Forecasting tools for forest fire danger based on satellite and weather data; Pilot applications in France and Greece

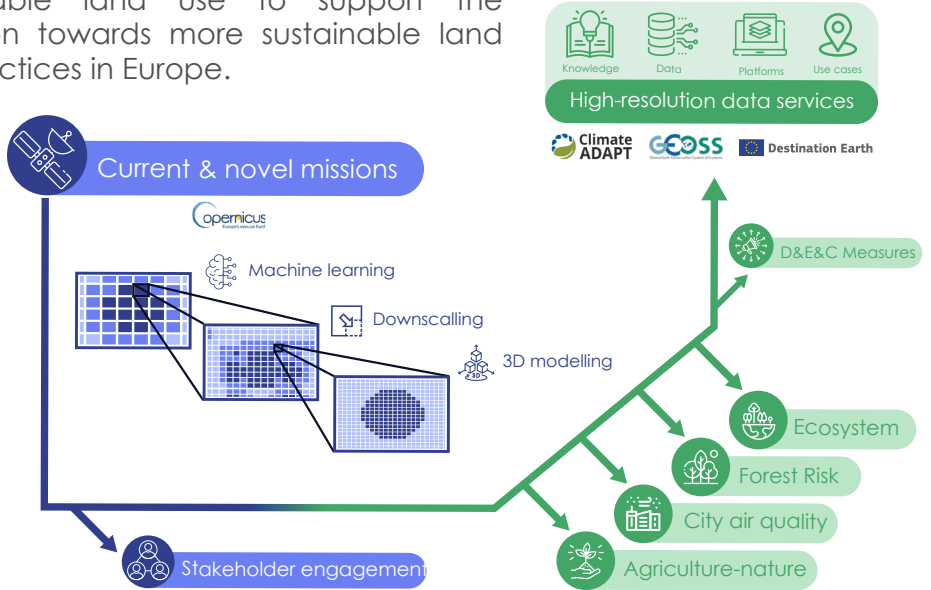


Ecosystems

Indicators for ecosystem condition, area, and greening; Open-access platform for ecosystem monitoring; Support for sustainability reporting under EU environmental directives

Our Value Chain

GreenEO combines satellite data from current and novel missions with advanced modeling, machine learning, and stakeholder co-design to deliver high-resolution environmental information. This integrated approach supports the development of tailored decision-support tools for sustainable land use to support the transition towards more sustainable land use practices in Europe.



How GreenEO Works

Our approach transforms complex environmental data into practical, accessible tools that support informed decisions at all levels, from local to European. The project brings together:



High-resolution data
from current- and next-generation Earth observation satellites



Advanced modelling
and machine learning techniques



Co-design
with local stakeholders and decision-makers

Our Partners

nilu



Lobelia.

LGI
sustainable innovation

INRAE



Funded by the European Union